

भारतीय सर्वेक्षण विभाग  
**SURVEY OF INDIA**



केन्द्रीय/राज्य सरकार के विभागों/कार्यालयों और निजी प्रकाशकों  
द्वारा मानचित्रों के प्रकाशन के लिए अनुदेश

**INSTRUCTIONS FOR PUBLICATION OF MAPS BY CENTRAL/  
STATE GOVERNMENT DEPARTMENTS/OFFICES AND  
PRIVATE PUBLISHERS**

मूल्य एक सौ बाईस रुपये

Price Rupees One Hundred Twenty Two



भारत सरकार का प्रतिलिप्यधिकार, 2015

Government of India Copy right, 2015

# भारतीय सर्वेक्षण विभाग SURVEY OF INDIA



केन्द्रीय/राज्य सरकार के विभागों/कार्यालयों और निजी प्रकाशकों  
द्वारा मानचित्रों के प्रकाशन के लिए अनुदेश

## INSTRUCTIONS FOR PUBLICATION OF MAPS BY CENTRAL/ STATE GOVERNMENT DEPARTMENTS/OFFICES AND PRIVATE PUBLISHERS

भारत के महासर्वेक्षक  
डॉ. स्वर्ण सुब्बा राव  
के आदेश से प्रकाशित

PUBLISHED BY ORDER OF  
Dr. Swarna Subba Rao  
SURVEYOR GENERAL OF INDIA

मूल्य एक सौ बाईस रुपये  
Price Rupees One Hundred Twenty Two



भारत सरकार का प्रतिलिप्यधिकार, 2015  
Government of India Copy right, 2015

## **PREFACE**

In this brochure instructions for publication of maps of India and procedures for obtaining clearance etc, have been consolidated for the benefit of publishers. The following salient features, explained in detail in this brochure, may be kept in view by the publishers while publishing the maps of India:-

To facilitate the preparation of accurate maps of India, publishers should use the outline maps of India published by Survey of India (vide Annexure 'B'). These outline maps can be obtained from the In-Charge, Map Record and Issue Wing, Map Archive & Dissemination Centre (MA&DC), Survey of India, Dehra Dun or other Map Sales Offices (vide Annexure 'D') on payment of nominal charges. Publishers who use these outline maps as base, to prepare their maps without change in scale, will not be required to get their maps certified for the external boundaries, island territories and coast-lines of India from the Officer-in-charge, Boundary Verification Wing, International Boundary Directorate (SGO), MA&DC Campus, Survey of India, Dehra Dun. However, the publishers should obtain prior permission of the Surveyor General of India to utilize any Survey of India publication (maps) for preparing their maps; for this also they may submit their application to the Officer-in-charge, Boundary Verification Wing, International Boundary Directorate (SGO), MA&DC Campus, Survey of India, Dehra Dun on the specimen form given in Annexure 'C'.

If the outline maps published by Survey of India are not utilized as base maps, certification of external boundaries, island territories and coast-lines of India, shown on the maps, from the Officer-in-charge, Boundary Verification Wing, International Boundary Directorate (SGO), MA&DC Campus, Survey of India, Dehra Dun is essential before publication.

The maps of Restricted areas (coloured red on the Index Map, vide Annexure 'A') on scales 1:1 million and larger may be published, provided these are photographic enlargements of 1:1 million or smaller scale unrestricted maps, after obtaining security clearance from the Ministry of Defence.

The maps of Restricted areas (coloured red on the Index Map, vide Annexure 'A') on scales 1:250,000 and smaller may also be published, provided no information/detail of sensitive nature should be shown and after obtaining prior clearance from Ministry of External Affairs, Defence and Survey of India as per laid down procedure.

The maps of unrestricted areas on scales 1:1 million and larger (limited to 1:250,000 scale only in the case of private publisher) can be published and will require prior clearance from the Ministry of External Affairs, Defence and Survey of India before publication.

The maps on scales smaller than 1:1 million covering any part or whole of India prepared on outline maps of India published by the Survey of India and that do not show detail in excess of those appearing on Survey of India unrestricted publications, will not require clearance from the Ministry of Defence and Survey of India before publication.

DEHRADUN :  
December, 2016

Dr. Swarna Subba Rao,  
Surveyor General of India

## CONTENTS

| <b>SECTION</b> | <b>PARTICULAR</b>  | <b>PAGE NO</b> |
|----------------|--|----------------|
| <b>I</b>       | Introduction. .. .. .  | 1              |
| <b>II</b>      | Restricted and unrestricted categories of maps.  | 2              |
| <b>III</b>     | Procedure for obtaining clearance from<br>Survey of India. .. .. .   | 3              |
| <b>IV</b>      | Use of outline maps of India published<br>by Survey of India. .. .. .                                      | 14             |
| <b>V</b>       | Foot-notes to appear on maps published<br>by Publisher. .. .. .  | 16             |
| <b>VI</b>      | Authority for spellings. .. .. .   | 18             |
| <b>VII</b>     | Maps for inclusion in geography books. .. .. .   | 19             |
| <b>VIII</b>    | Guide Maps of towns. .. .. .   | 20             |
| <b>IX</b>      | Factors causing delay in the process<br>of scrutiny and certification. .. .. .                             | 22             |
| <b>X</b>       | Important hints to be observed at the<br>cartographic stage. .. .. .                                       | 24             |
| <b>XI</b>      | Instruction for Soft Copy Map Publication .. .. .  | 26             |
| <b>XII</b>     | Instruction for Publication in Web Map Portals .. .. .   | 27             |
| <b>XIII</b>    | Instruction for display maps in news room activities<br>and other public media including presentation etc. | 29             |
| <b>XIV</b>     | General hints for improving the quality of maps.   | 30             |
| <b>XV</b>      | Legal provisions. .. .. .  | 31             |

Annexure 'A' Index Map.

Annexure 'B' List of outline maps of India  
published by Survey of India.

Annexure 'C' Application form.

Annexure 'D' List of Maps Sales Offices of Survey of India.

## SECTION I

### INTRODUCTION

1. Survey of India is responsible for topographical surveys and publishing authoritative topographical and geographical maps of India. A few publishers and other agencies have also been preparing maps to meet the growing demand for maps in English and regional languages. The Govt. of India considers that maps published for use in the country should contain accurate and reliable information, particularly with regard to the external boundaries and coast-lines of India, as wrong depiction of these amounts to questioning the territorial integrity. Accordingly, instructions have been issued from time to time by the Govt. of India (Ministry of Defence, External Affairs, Home Ministry and Erstwhile Ministry of Scientific Research and Cultural Affairs) imposing restrictions on scale and contents of map which are published.

2. The copyright of all maps published by Survey of India vests with the Government of India and these maps may not be reproduced or used as basis by publishers without the permission of Surveyor General of India. Any unauthorised reproduction for utilisation of Survey of India maps constitutes an infringement of the Copyright Act, 1957 (14 of 1957).

3. The instructions content in the brochure are applicable to all **publishers.**

**Note:- The word 'publishers' used in the text stands for the Central/State Govt. Department/Offices (except Survey of India) and Private publishers.**

## SECTION II

### **RESTRICTED AND UNRESTRICTED CATEGORIES OF MAPS**

**4.** An index map of India, showing the areas in which certain categories of maps have been declared as Restricted, is given at Annexure 'A'.

Following categories of maps have been declared as Restricted:-

- (i) All topographical and geographical maps of the area coloured red on the above mentioned index map, on scales 1:1 million and larger, **NORTH** of 20° Latitude. This will also include similar maps of Bhutan and Sikkim.
- (ii) All Topographical and geographical maps of the coastal area coloured red on the above mentioned index map, on scales larger than 1:1 million, **SOUTH** of 20° Latitude.
- (iii) All topographical and geographical maps of the outlying islands, viz. ANDAMAN & NICOBAR and LAKSHADWEEP, MINICOY & AMINIDIVI ISLANDS, on scales 1:1 million and larger.

Following categories of Maps have been declared as Unrestricted :-

- (i) All topographical and geographical maps of the uncoloured area of the index map.
- (ii) All topographical and geographical maps of the area coloured red on the index map smaller than 1:1 million.

Further, under mentioned series of maps on scale 1:1 million covering India come under unrestricted category.

- (i) 1:1 million World Aeronautical Charts (ICAO).
- (ii) 1:1 million Carte Internationale du Monde  
(International Map of the World).

## SECTION III

### **PROCEDURE FOR OBTAINING CLEARANCE FROM SURVEY OF INDIA**

**5.** When a publisher wants to prepare a map in which India or part of India falls, he/she may first consult Annexure 'B' and select the appropriate outline map to be used as base for his/her compilation.

**6.** For preparing maps on scales larger than those given in Annexure 'B' the under mentioned maps or other unrestricted geographical or topographical maps published by Survey of India may be used with the permission of the Officer-in-charge, Boundary Verification Wing, International Boundary Directorate (SGO), MA&DC Campus, Survey of India, Dehra Dun.

- (i) **1:4** million scale political Map of India.
- (ii) **1:1** million scale State Maps.
- (iii) **1:1** million scale International Map of the world.
- (iv) **1:250,000** scale District Planning Map

Note:- For permission to utilise Survey of India maps, publisher should apply on the prescribed specimen application form given in Annexure 'C'.

#### **7. Procedure for maps of Restricted Category :-**

- (i) For publishing a map of restricted category, as defined in Section II, the Publisher must get prior permission from the Ministry of Defence. For this he/she should send his/her application to his State Government, who would forward the same to the Ministry of Defence with their recommendations. Maps of restricted areas on scales larger than 1:1 million and up to 1:250,000, may also be published provided they do not show any information/detail of sensitive nature and prior clearance is obtained from Ministry of External Affairs, Defence and Survey of India as per procedure.



- (ii) Maps of restricted areas on scales larger than 1:1 million scale may be published, provided they are photographic enlargements of 1:1 million scale unrestricted maps published by Survey of India and after security clearance from the Ministry of Defence. Spherical ticks and their values will not appear on such maps. Further following note will also appear :-

“This map is a direct photographic enlargement of .....

(Here give full particulars of the map utilised, e.g. “Political Map of India, scale 1:4 million, New Edition 2009, published by Survey of India”).

**Maps on scales smaller than 1:4 million will not require clearances from the Ministry of Defence.** However, clearance from Survey of India would be required.

- (iii) After getting clearance from the Ministry of Defence, the publisher should submit the original drawings of maps (if due to some reasons it is not possible to send the original drawings, then two printed proofs of each map in full colours) to the Officer-in-charge, Boundary Verification Wing, International Boundary Directorate (SGO), MA&DC Campus, Survey of India, Dehra Dun for scrutiny/approval. However it is advisable to send the original drawings to the Officer-in-charge, Boundary Verification Wing, International Boundary Directorate (SGO), MA&DC Campus, Survey of India, Dehra Dun and clearance obtained before preparing blocks/plates to avoid loss on account of rejection of blocks/plates that may occur if any correction is needed before giving clearance.
- (iv) On receipt of original drawings/proofs, the Officer-in-charge, Boundary Verification Wing, International Boundary Directorate (SGO), MA&DC Campus, Survey of India, Dehra Dun will check whether the clearance of the Ministry of Defence for publication has been obtained by the publisher or not. If the clearance has been granted, then the charges for scrutiny of the drawings/proofs will be intimated to the publisher for

remitting the same to the Senior Accounts Officer, Central pay & Accounts Office, Survey of India, Dehra Dun-248 001. The scrutiny of drawings/proofs is taken up only after the receipt of the charges by the above mentioned officer.

- (v) Scrutiny charges are leviable at a flat rate of Rs.2700/- per map for checking external boundaries and coast-lines of India, irrespective of scale. However only Rs.660/- per map is leviable for scrutiny of additional maps on the same scale & layout sent at the same time and for maps prepared by utilising outline maps of Survey of India, vide Annexure 'B'.
- (vi) If internal details/state boundaries are to be authenticated by Survey of India and if the Department agrees to take up job, additional charge on the basis of actual expenditure would be payable by the publisher. However, the note 'For omissions, reference may be made to the publisher' will be incorporated on the map.
- (vii) The detail on maps containing external boundaries and coastlines of India on scales 1:1 million and larger should be strictly in accordance with the maps or plates published by the National Atlas and Thematic Mapping Organisation on scale 1:2 million or maps published by Survey of India on scale 1:1 million or 1:250,000 for open circulation.
- (viii) Maps on scales smaller than 1:1 million but larger than 1:4 million covering fully or partly restricted areas can be published only after obtaining security clearance from the Ministry of Defence.
- (ix) On receipt of scrutiny charges, the original drawings/proofs are scrutinised and returned to the publisher by the Officer-in-charge, Boundary Verification Wing, International Boundary Directorate (SGO), MA&DC Campus, Survey of India, Dehra Dun with his observations/corrections. During this scrutiny

complete check up of the contents is not done but following items are only checked.

- (a) External boundaries of India together with details astride.
  - (b) Coast-lines of India
  - (c) Island territories of India.
  - (d) For maps of scales larger than 1:4 million Civil Vital Areas/Vital Points.
- (x) Normally, detail to be shown on such maps should not be in excess of those appearing on Survey of India unrestricted publications on which these maps are based. However, additional detail may be incorporated after ascertaining the accuracy of the survey of such additional details provided they do not come under the category of Defence installations of Civil Vital Areas/Vital Points. If the additional information belongs to the above mentioned categories, prior clearance from the Ministry of Defence would be required.
- (xi) While depicting the physical features like dams and reservoirs on maps larger than 1:1 million, their names should not be indicated. Locality names may appear.
- (xii) The publisher should submit two printed proofs in full colours, prepared from the corrected drawings to the Officer-in-charge, Boundary Verification Wing, International Boundary Directorate (SGO), MA&DC Campus, Survey of India, Dehra Dun for certification.
- (xiii) It should be noted that after certification of a map by Officer-in-charge, Boundary Verification Wing, International Boundary Directorate (SGO), MA&DC Campus, Survey of India, Dehra Dun and before printing, any changes is incorporated in the map, including change in Edition, fresh certification will be required to be obtained.
- (xiv) After Certification, the Publisher has to carry out the corrections if any, pointed out by the Officer-in-charge, Boundary Verification Wing, International Boundary

Directorate (SGO), MA&DC Campus, Survey of India, Dehra Dun before the maps are finally printed.

- (xv) The Publisher should send 2 copies of finally printed maps or the publications in which the map is included to the Officer-in-charge, Boundary Verification Wing, International Boundary Directorate (SGO), MA&DC Campus, Survey of India, Dehra Dun for his final approval before release of maps/publications.

#### **8. Procedure for maps of Unrestricted Category :-**

- (i) The Publisher should submit the original drawings of maps (if it is not possible to send the drawings then two printed proofs in full colours of each map) to the Officer-in-charge, Boundary Verification Wing, International Boundary Directorate (SGO), MA&DC Campus, Survey of India, Dehra Dun for scrutiny/approval. To avoid delay and possibility of rejection of blocks/plates. However it is advisable to send the original drawings to the Officer-in-charge, Boundary Verification Wing, International Boundary Directorate (SGO), MA&DC Campus, Survey of India, Dehra Dun before preparing blocks/plates to avoid loss on account of rejection of Blocks/ Plates that may occur if any correction is needed before clearance.
- (ii) On receipt of the drawings/proofs, the scrutiny charges will be intimated to the Publisher who may remit the same to the Senior Accounts Officer, Central Pay & accounts Office, Dehra Dun – 248 001. The scrutiny of drawings/proofs is taken up only after the receipt of the charges by the above mentioned officer.
- (iii) For scrutiny charges, refer Para 7(v) above.
- (iv) On receipt of scrutiny charges, the original drawings/proofs are scrutinised and returned to the Publisher by the Officer-in-charge, Boundary Verification Wing, International Boundary Directorate (SGO), MA&DC Campus, Survey of

India, Dehra Dun with his observations/corrections. During this scrutiny complete check up of the contents is not done but following items only are checked.

- (a) External boundaries of India together with details astride.
- (b) Coast-lines of India.
- (c) Island territories of India.
- (d) For maps of scales larger than 1:4 million Civil Vital Areas/Vital Points.

**Note :- After scrutiny, the original drawings/proofs are returned to the publisher with observations/corrections if any.**

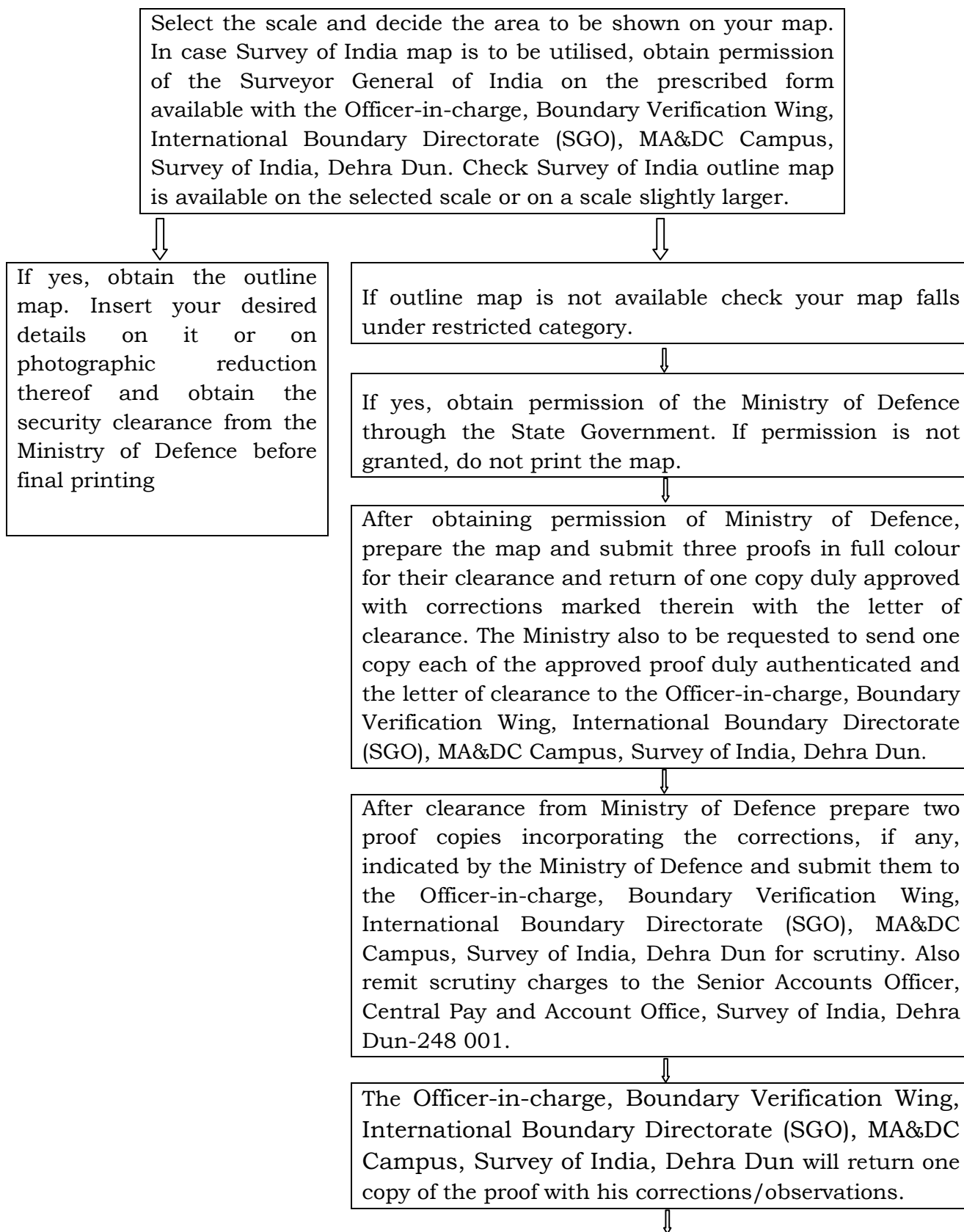
- (v) Normally, detail to be shown on such maps should not be in excess of those appearing on survey of India unrestricted publications on which these maps are based. However, additional details may be incorporated after ascertaining their accuracy and if they do not come under the category of Defence installations or Civil Vital Areas/Vital Points. In case the additional information belongs to the above mentioned category or publishing maps on scales 1:4 million and larger with additional information prior clearance from the Ministry of Defence would be required.
- (vi) While depicting the physical features like dams and reservoirs on maps larger than 1:1 million, their names should not be indicated. Locality names may appear, if these are named after some localities.
- (vii) The Publisher should submit two printed proofs in full colours, prepared from the **corrected drawings** to the Officer-in-charge, Boundary Verification Wing, International Boundary Directorate (SGO), MA&DC Campus, Survey of India, Dehra Dun.
- (viii) It should be noted that the certification of a map by the Officer-in-charge, Boundary Verification Wing, International Boundary Directorate (SGO), MA&DC Campus, Survey of India, Dehra Dun is valid for a period of six months only. If

the map is not printed within six months of the date of certification, certification will be required to be obtained fresh.

- (ix) The Officer-in-charge, Boundary Verification Wing, International Boundary Directorate (SGO), MA&DC Campus, Survey of India, Dehra Dun, after scrutiny of the proofs certifies correctness of the external boundaries and coastlines of India delineated therein or intimates the inaccuracies found there in to the Publisher.
- (x) The Publisher should carry out the corrections pointed out by the Officer-in-charge, Boundary Verification Wing, International Boundary Directorate (SGO), MA&DC Campus, Survey of India, Dehra Dun before the maps are finally printed.
- (xi) The Publisher should then send 2 copies of finally printed map or the publication in which the map is included to the Officer-in-charge, Boundary Verification Wing, International Boundary Directorate (SGO), MA&DC Campus, Survey of India, Dehra Dun, for his final approval before release of maps/publication.

## FLOW CHART-A

### PROCEDURE FOR OBTAINING THE APPROVAL OF GOVERNMENT OF INDIA BY THE PUBLISHERS FOR THEIR MAPS FALLING IN RESTRICTED ZONE



Submit 2 proofs afresh along with corrections traces sent by him to the Officer-in-charge, Boundary Verification Wing, International Boundary Directorate (SGO), MA&DC Campus, Survey of India, Dehra Dun after carrying out his corrections/observations by him.



The Officer-in-charge, Boundary Verification Wing, International Boundary Directorate (SGO), MA&DC Campus, Survey of India, Dehra Dun will return one proof with his certification/ observations for final printing.



Send to the Officer-in-charge, Boundary Verification Wing, International Boundary Directorate (SGO), MA&DC Campus, Survey of India, Dehra Dun two copies of the final publication after attending to his observations, if any, for issue of release order.



The Officer-in-charge, Boundary Verification Wing, International Boundary Directorate (SGO), MA&DC Campus, Survey of India, Dehra Dun will return one copy of the publication with the release order.

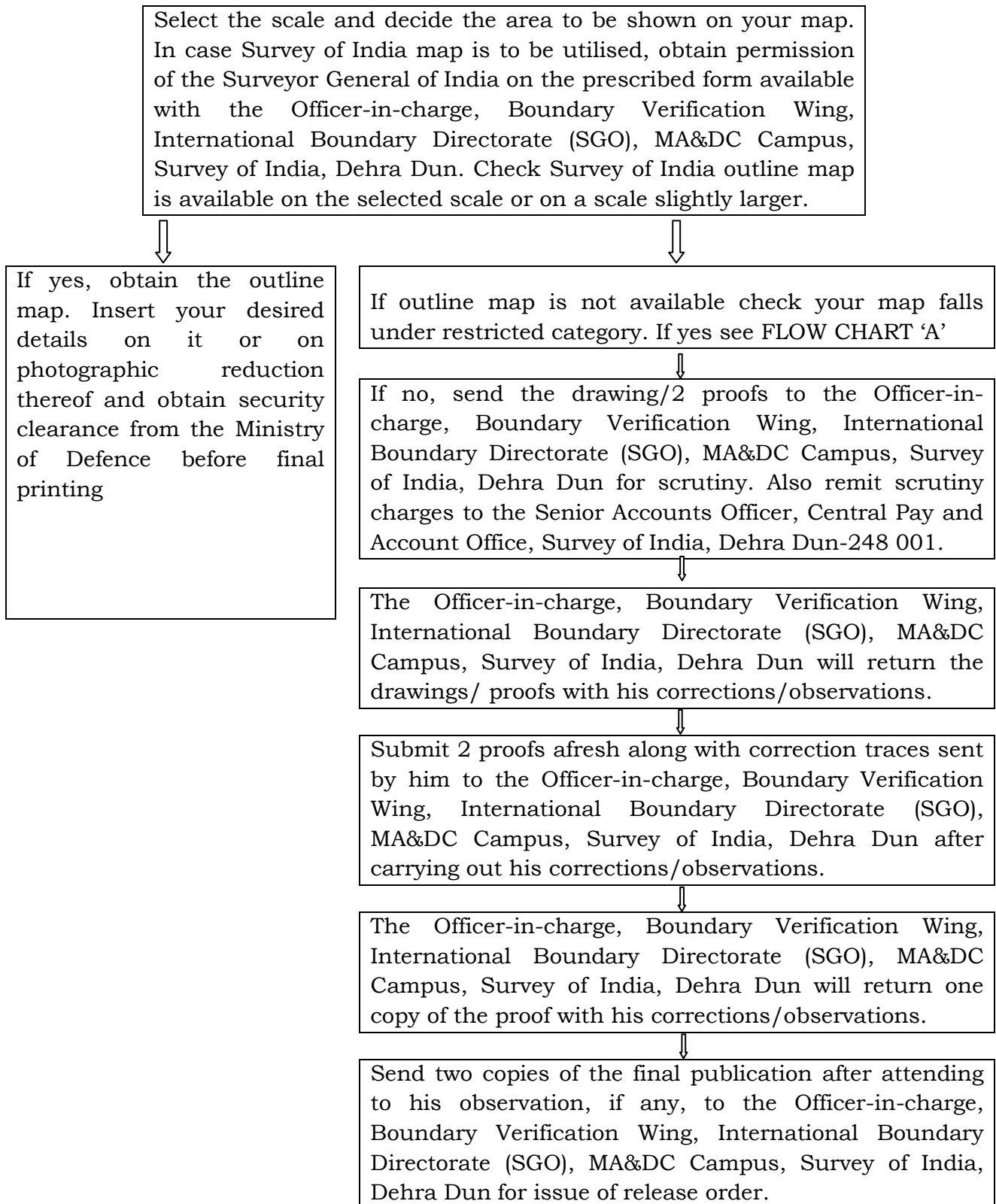


Release the publication.



## FLOW CHART-B

### PROCEDURE FOR OBTAINING THE APPROVAL OF GOVERNMENT OF INDIA BY THE PUBLISHERS FOR THEIR MAPS FALLING IN UNRESTRICTED ZONE



---

The Officer-in-charge, Boundary Verification Wing, International Boundary Directorate (SGO), MA&DC Campus, Survey of India, Dehra Dun will return one copy of the publication with the release order.



Release the publication.

## SECTION IV

### USE OF OUTLINE MAPS OF INDIA PUBLISHED BY SURVEY OF INDIA

**9.** To facilitate the preparation of accurate maps of India by the Publisher, Survey of India has printed outline maps of India on different scales (See Annexure 'B' for the list of the outline maps). These outline maps are available in following styles:-

- (i) Outline maps of India with the external boundaries and coast-lines and island territories of India.
- (ii) Outline maps of India with the external boundaries and coast-lines, island territories and state boundaries.
- (iii) Outline maps of India with the external boundaries and coast-lines, island territories and major rivers.

**Note:-** The above mentioned outline maps are printed in a single colour-black. These are available as paper copies or film positives. The price of these outline maps varies from Rs.1.00 to Rs. 5.00 per paper copy.

**10.** The outline maps can be obtained on payment of nominal charges from the Officer-In-Charge, Map Record and Issue Wing, Survey of India or other Map Sale Offices list of which is given in Annexure ' D'. The publishers who use the above outline maps or photographic reductions of these as base to prepare maps, will not be required to get their maps cleared by the Officer-in-charge, Boundary Verification Wing, International Boundary Directorate (SGO), MA&DC Campus, Survey of India, Dehra Dun.

**11.** The publishers may publish their maps on same scale or scales slightly smaller than those of the outline maps supplied by the Survey of India to suite their requirements.

**12.** Reduction should not be less than one third of the outline maps. Such reductions are normally done when preparing the proofs for submission to the Officer-in-charge, Boundary Verification Wing, International Boundary

Directorate (SGO), MA&DC Campus, Survey of India, Dehra Dun, for his final check and certification of external boundaries and coast-lines and not at the initial stage when the drawings submitted to him for verification of the external boundaries and coast-lines of India.

**13.** Maps based upon Survey of India outline maps are exempted from scrutiny by the Officer-in-charge, Boundary Verification Wing, International Boundary Directorate (SGO), MA&DC Campus, Survey of India, Dehra Dun provided the external boundaries and coast-lines printed on these are not tampered with. However, it will be obligatory on the part of the publishers to enter the following foot-notes on the map.

- (i) Based upon Survey of India outline map printed .....  
(here enter the year of printing of outline map).
- (ii) © Government of India Copyright .....  
(here enter the year of printing of the map by the publishers).

**14.** The outline maps are not transferable, i.e. only the purchaser is entitled to make use of the outline maps. Preparation of duplicates of these outline maps by the publishers is strictly prohibited.

## SECTION V

### **FOOT-NOTES TO APPEAR ON MAPS PUBLISHED BY PUBLISHERS**

**15.** Following foot-notes may appear on the maps as necessary:-

- (i) Based upon Survey of India map with the permission of the Surveyor General of India.
- (ii) The responsibility for the correctness of internal details rests with the publishers; for errors and omissions reference may be made to him.  
(This foot-note will be incorporated on maps on which internal details have not been checked by Survey of India).
- (iii) The territorial waters of India extend into the sea to a distance of twelve nautical miles measured from the appropriate base line.  
(This note will appear on maps on which coast-lines and island territories of India are shown).
- (iv) The boundary of Meghalaya shown on this map is as interpreted from the North-Eastern Areas (Reorganisation) Act. 1971, but is yet to be verified.  
(This note will appear on maps showing state boundary of Meghalaya till its verification is completed).
- (v) The administrative headquarters of Haryana & Punjab are at Chandigarh.  
(This note will appear on maps containing the two states and/ or Chandigarh).
- (vi) The State boundary between Uttarakhand & Uttar Pradesh, Bihar & Jharkhand, Chhattisgarh & Madhya Pradesh, and Telangana & Andhra Pradesh have not been verified by the State Government concerned.

(vii) The topographical detail within India are based upon Survey of India maps with the permission of the Surveyor General of India, the **Copyright 19 .....** (year) of which vests with the Government of India.

(This note will appear on maps which show India or part thereof and territories outside).

(viii) The external boundaries and coast-lines of India agree with the **Record/Master Copy** certified by Survey of India.

(This note regarding verification of external boundaries and coast-lines of India will be incorporated on the map by the Publisher).

(ix) In the event of the publishers using a photographic enlargement of a smaller scale unrestricted map the following foot-notes will be shown.

(This map is a direct photographic enlargement of map.....

(Here give full particulars of the map utilised i.e., "Political Map of India, scale 1:4 million, New Edition 2009, published by Survey of India").

## SECTION VI

### **AUTHORITY OF SPELLINGS**

**16.** Survey of India is the authority for transliteration of names from local script into Devnagari and Roman scripts. Hence, it is imperative that the publishers who want to publish maps with names in Devnagari/Roman scripts, strictly follow the spellings of name appearing on Survey of India maps.

**17.** In the case of names in scripts other than Devnagari/Roman, the publishers are advised to consult the concerned State Government.

## SECTION VII

### **MAPS FOR INCLUSION IN GEOGRAPHY BOOKS**

**18.** Maps in geography books fall into under mentioned two categories:-

- (i) Maps showing topographical features, e.g. hill ranges, river systems, etc. and cultural detail, e.g. roads, railways, towns, places of tourist interest etc.
- (ii) Maps showing non topographical thematic information e.g., crops, rainfall, population, etc.

**19.** In regard to category 18(ii), it would suffice if a few copies of the maps which are used as base are sent to the Officer-in-charge, Boundary Verification Wing, International Boundary Directorate (SGO), MA&DC Campus, Survey of India, Dehra Dun for verification of the external boundaries and coast-lines of India. After getting the certification from the Officer-in-charge, Boundary Verification Wing, International Boundary Directorate (SGO), MA&DC Campus, Survey of India, Dehra Dun, the base maps may be used by the Publisher for production of maps without further certification by the Officer-in-charge, Boundary Verification Wing, International Boundary Directorate (SGO), MA&DC Campus, Survey of India, Dehra Dun, provided that :-

- (i) There is no change in scale.
- (ii) No new topographical features, sites or geographical names are added.
- (iii) all detail, names and remarks are faithfully reproduced for which the responsibility will be on the publisher.
- (iv) No political tint or boundary riband other than those approved by the Officer-in-charge, Boundary Verification Wing, International Boundary Directorate (SGO), MA&DC Campus, Survey of India, Dehra Dun.
- (v) For subsequent editions of the books, the base maps are certified afresh.



## SECTION VIII

### GUIDE MAPS OF TOWN

#### **20. Guide maps of towns falling in Restricted Zone**

These cannot be published by the publishers without obtaining clearance from the Ministry of Defence as these maps would be on scales larger than 1:1 million.

**21.** Following Do's and Don'ts should be kept in mind while preparing guide maps of towns falling in Restricted Zone, for open circulation :-

- (i) Do not depict contours. Relief may be shown by shading.
- (ii) Do not show trigonometric/spot heights; instead, a foot-note stating the average height of the town above MSL may be incorporated.
- (iii) Do not depict spherical lines/ticks or their values.
- (iv) Arbitrary square mesh of lines may be projected for ease of reference.
- (v) Do not show mile/kilometre stone ticks.
- (vi) Do not depict Vital Areas/Vital Places and Defence installations. When in doubt, consult the State Government and the Ministry of Defence.

#### **22. Guide maps of towns falling in Unrestricted Zone**

These can be published by the publishers on scale slightly smaller than those of the guide maps of towns published by Survey of India after obtaining permission from the Officer-in-charge, Boundary Verification Wing, International Boundary Directorate (SGO), MA&DC Campus, Survey of India, Dehra Dun. All guide maps on the scale 1:4 million and larger should be referred to the Ministry of Defence for security clearance before final printing.

**23.** Following Do's and Don'ts should be kept in mind while preparing guide maps of towns in Unrestricted Zone.

- (i) Do not depict spherical lines/ticks or their values.
- (ii) Arbitrary square mesh of lines may be projected for ease of reference.

- (iii) Do not depict Vital Areas/Vital Places and Defence installations. When in doubt, consult the State Government and the Ministry of Defence.

## SECTION IX

### **FACTORS CAUSING DELAY IN THE PROCESS OF SCRUTINY AND CERTIFICATION**

**24.** Some of the factors responsible for delay of scrutiny and certification of maps, as observed, are explained below:-

- (i) The original drawings supplied by the publishers were based on inaccurate and unauthenticated or obsolete publications, with the result extensive corrections were required to be carried out. In a few cases very bad original drawings had to be rejected necessitating these to be prepared afresh.
- (ii) In some cases, the publishers did not submit the original drawings but instead supplied proof copies in the first instance for scrutiny by the Officer-in-charge, Boundary Verification Wing, International Boundary Directorate (SGO), MA&DC Campus, Survey of India, Dehra Dun. In such cases there was a possibility of the blocks/plates being rejected, depending upon the extent and nature of corrections.
- (iii) In a number of cases, the corrections pointed out by the Survey of India were not carried out properly and certain instructions (e.g. incorporation of foot-notes etc.) were ignored. These resulted in avoidable correspondence which inevitably caused delays.
- (iv) While submitting proofs for certification the original drawing/proof corrected by the Officer-in-charge, Boundary Verification Wing, International Boundary Directorate (SGO), MA&DC Campus, Survey of India, Dehra Dun were not enclosed. This resulted in unnecessary correspondence in requesting the Publisher to send the original drawing/proofs as without comparing the revised proofs against the original drawing/proof (which had been scrutinised) the certificate regarding the correctness of the

external boundaries and coast-lines of India could not be issued.

- (v) In a few cases the publishers had not sent the Bank draft in favour “Senior Accounts Officer, Central Pay and Account Office, Survey of India, Dehra Dun-248 001”. These drafts could not be accepted and had to be returned to the Publisher for sending correct Bank draft drawn on Dehra Dun branch of any Nationalised Bank in favour of the Senior Accounts Officer, Central Pay and Account Office, Survey of India, Dehra Dun-248 001”.

## SECTION X

### **IMPORTANT HINTS TO BE OBSERVED AT THE CARTOGRAPHIC STAGE**

**25.** Details, names, etc. Should be entered clear of the external boundaries and coast-lines of India.

**26.** Special care should be taken to ensure that in the border areas the topographical information is depicted very accurately.

**27.** Do not show any Defence Installations or Civil Vital Places/Points e.g. Hydroelectric Projects, Dams, Oil Refineries, Atomic Power Stations, Heavy Engineering Factories, Steel Plants, Civil Dockyards, Important Railway Yards, Workshops, Installations under All India Radio, Telecommunication Installations and Water Purification/Supply Installations, etc. on maps. In case of doubt prior clearance from the Ministry of Defence/Home Affairs, should be obtained.

Changes in district boundaries may be incorporated as and when they occur, except in the case of the State of Jammu and Kashmir to which separate rules apply.

**28.** Historical maps should, in addition to the historical information, show the present external boundaries of India by the approved symbol only.

**29.** Where the external boundaries/coast-lines of India have been certified by the Officer-in-charge, Boundary Verification Wing, International Boundary Directorate (SGO), MA&DC Campus, Survey of India, Dehra Dun on the final proof of the map, one of the following notes, as applicable will be on the map:-

The external boundaries and coast-lines of India shown on this map agree with the Master Copy certified by Survey of India.

or

The external boundary of India shown on this map agrees  
Master Copy certified by Survey of India.

or

The coast-lines of India shown on this map agree with the  
Master Copy certified by Survey of India.

**30.** It should be noted that after certification of the map by the Officer-in-charge, Boundary Verification Wing, International Boundary Directorate (SGO), MA&DC Campus, Survey of India, Dehra Dun and before printing if any change is incorporated in the map, including change in Edition, fresh certification is required to be obtained.

**31.** For reprinting of a map which has been approved by the Ministry of Defence earlier, the clearance must be sought by the Central/State Government Departments and the publishers before the same is reprinted even if there is no change.

**Note:-**

- (i) The original drawings should be prepared on dimensionally stable material only.
- (ii) International Boundary and coast-lines should be depicted clear & distinct and should be free from any superimposition of other details i.e. of map standards.

## SECTION XI

### **INSTRUCTION FOR SOFT COPY MAP PUBLICATION**

**32.** For publication of a map individually or as part of any publication using Survey of India map data in any form the following information/documents are required to be submitted to Surveyor General of India, Survey of India, Post Box No. 37, Hathibarkala Estate, Dehra Dun-248001, Uttarakhand for obtaining licence for publication.

- (i) Area of which map data is required.
- (ii) Name of the publication in which the map will be included.
- (iii) Two Original copies of MOU of publishing Licence duly signed in by the Publisher or his authorised signatory.  
( Proforma of publishing Licence can be down loaded from the website of Survey of India: [www.surveyofindia.gov.in](http://www.surveyofindia.gov.in). For downloading the proforma click “National Map Policy” and then “Publishing Licence”
- (iv) Application form ( Annexure – C) duly filed in.

On receipt of the above information/ documents, one signed copy of MOU of Publishing Licence is sent back to the Publisher for his record along with information about Licence Fee to be paid. On receipt of the Publishing Licence Fee in advance in favour of Sr. Accounts Officer, Central Pay and Accounts Office, Survey of India, Dehra Dun, the required data is supplied along with Publishing Licence.

Before publishing the map, the publisher has to obtain clearance from Ministry of Defence by submitting the map data in raster (JPEG / PDF) and Hard copy format to MOD.

In case of the data containing external boundary or coast line of India certification for the same also has to be obtained from the Officer-in-charge, Boundary Verification Wing, International Boundary Directorate (SGO), MA&DC Campus, Survey of India, Dehra Dun by the process as described in this book.

## SECTION – XII

### **INSTRUCTIONS FOR PUBLICATION IN WEB MAP PORTALS**

**33.** If Survey of India map data are to be published in Web Map Portal it should be in raster compressed format i.e. JPEG or PDF extracted from any 1: 1M or smaller scale map data base. The data to be published in Web Map Portal on scale 1: 4M and larger should be security cleared from MOD. Any data published in Web Map Portal having External Boundary or Coast Line should be certified by the Officer-in-charge, Boundary Verification Wing, International Boundary Directorate (SGO), MA&DC Campus, Survey of India, Dehra Dun.

Before publishing the map data of Survey of India, the Publisher has to obtain licence from Surveyor General of India, by the process as described in the web site of Survey of India: **[www.surveyofindia.gov.in](http://www.surveyofindia.gov.in)**. Following categories of Licences are applicable and prescribed Licence formats are available on the home page of above site.

(i) **MEDIA LICENCE**

Where the LICENSEE is the owner of the Publication/ News Paper/ TV channel/ Film Production unit and is desirous to use various SOI products in printed news & feature articles, television programs & feature films.

(ii) **PUBLISHING LICENCE**

Where the LICENSEE is desirous to reproduce, and use the material owned by the SOI for its business use.

(iii) **DIGITAL LICENCE**

Where the LICENSEE is desirous to use the material owned by the SOI for its internal business use.

(iv) **INTERNET LICENCE**

Where the LICENSEE is the owner of the World Wide Web(name to be given subsequently) where various SOI products will be placed for use by the end user in accordance with the terms of Licence.



(v) **LICENSE AGREEMENT FOR VALUE ADDITION**

Where the LICENSEE requests SOI to provide security vetted unclassified or unrestricted digital products in order that:-

- (a) The LICENSEE can use this digital data as one of the key inputs for the development of digital map products.
- (b) The LICENSEE can value add on the Licensed digital data, creates, markets and sells published products based on the above digital products, and / or
- (c) The LICENSEE can create digital applications and integrates these applications with the value added digital data, to be marketed and sold by the LICENSEE.

SECTION – XIII

**INSTRUCTIONS FOR DISPLAY MAPS IN NEWS ROOM ACTIVITIES AND  
OTHER PUBLIC MEDIA INCLUDING PRESENTATION ETC.**

**34.** While Display of maps in back ground of News Rooms or Otherwise including similar display in any other public media, instructions given under Section VII will be broadly applicable and adhered to.

## SECTION XIV

### GENERAL HINTS FOR IMPROVING THE QUALITY OF MAPS

**35.** The following factors need to be considered while sending original drawings, colour proofs of Maps to the Officer-in-charge, Boundary Verification Wing, International Boundary Directorate (SGO), MA&DC Campus, Survey of India, Dehra Dun.

- (i) **Projection & Scale:-** Original drawing or colour proofs should bear the type of projections used and scale in the metric system.
- (ii) **Symbols:-** It is recommended that as far as possible symbology used by Survey of India may be adopted.
- (iii) **Paper used:-** Only durable smooth and strong paper after proper seasoning dimensionally stable material should be used for original drawings, colour proofs or maps.
- (iv) **Despatch of Maps:-** The original drawings/proofs/maps should be sent to office-in-charge Boundary Verification Wing (SGO) in round container instead of envelopes to avoid erasure, creases and distortions.
- (v) **Training:-** Indian Institute of Surveying and Mapping (IISM), Hyderabad runs various courses in Cartography and Map Reproduction to suit different requirements. Cartographic firms will stand to benefit, if they depute their employees to undergo training in suitable courses. This along with improving their own performance will result in raising the general standard of maps produced in the country. Enquiries regarding the training courses may be addressed to the Additional Surveyor General, Indian Institute of Surveying and Mapping (IISM), P.O. Uppal, Hyderabad-500039.

## SECTION XV

### LEGAL PROVISIONS

**36.** The topographical and geographical maps published by Survey of India are authoritative official documents of the Govt. of India, who has from time to time issued instructions to States/Union territories to ensure that the external boundaries of India on various kinds of maps (Published or displayed) including those included in textbooks, atlases, web portals and on any visual media are depicted correctly.

**37.** Publication of maps (1) depicting inaccurate external boundaries and coast-lines of India tantamount to questioning the territorial integrity of India and is a cognizable offence under the Criminal Law Amendment Act, 1961. It is possible that some of the publishers may not be aware of the harm and embarrassment, these inaccurate maps cause to the Government and the legal penalties for publication of such maps, intentional or inadvertent, attract. In this connection the related extracts of the following Govt. of India Acts and Notifications are reproduced below:-

- (i) Section 5 of Official Secret Act, 1923 (Act No. 19 of 1923).
- (ii) The Criminal Law Amendment Act, 1961 (Act No.23 of 1961).
- (iii) Section 14 and 63 of Copyright Act, 1957 (Act No.14 of 1957).
- (iv) Notification No.19-Cus/F.No.405/18/75-Cus.III dated 6.3.1976. [Issued under Customs Act, 1962 (52 of 1962)].
- (v) Notification No.227 Customs F.No. 405/3/80 Cus.III dated 29.11.1980 [Issued under Customs Act, 1962 (52 of 1962)].

**(1) Note :- “Publishing of Maps” stands for depiction of map in all forms which include hard copy, digital or on any visual media.**

**38.** Section 5 of OFFICIAL SECRET ACT, 1923 (Act No.19 of 1923).

5(1) If any person having in his possession or control any secret official code or pass word or any sketch, plan, model, article, note, document or information which relates to or is used in a prohibited place or relates to anything in such a place [or which is likely to assist, directly or indirectly, an enemy or which relates to a matter the disclosure of which is likely to affect the sovereignty and integrity of India, the security of the State or friendly relations with foreign states or which has been made or obtained in contravention of this Act] or which he has been entrusted in confidence to him by any person holding office under Government, or which he has obtained or to which he has had access owing to his position as a person who holds or as a person who is or has been employed under a person who holds or has held such an office or contract -

(a) Wilfully communicates the code or pass word, sketch, plan model, article, note, document or information to any person other than a person to whom he is authorised to communicate it, or a court of Justice or a person to whom it is, in the interests of the State, his duty to communicate it; or

(b) Uses the information in his possession for the benefit of any foreign power or in any other manner prejudicial to the safety of the State; or

(c) retains the sketch, plan, model, article, note or document in his possession or control when he has no right to retain it, or when it is contrary to his duty to retain it, or wilfully fails to comply with all directions issued by lawful authority with regard to the return or disposal thereof; or

[.....] substituted by Act 24 of 1967 S.5, for “or which has been made or obtained in contravention of this act”.

(d) fails to take reasonable care of, or so conducts himself as to endanger the safety of, the sketch, plan, model, article,

note, document, secret official code or pass word or information; he shall be guilty of an offence under this section.

(2) If any person voluntarily receives any secret official code or pass word or any sketch, plan, model, article, note, document or information knowing or having reasonable ground to believe, at the time when he receives it, that the code, pass word, sketch, plan, model, article, note, document, or information is communicated in contravention of this Act, he shall be guilty of an offence under this section.

(3) If any person having in his possession or control any sketch, plan, model, article, note, document, or information, which relates to munitions of war, communicates it, directly or indirectly, to any foreign power or in any other manner prejudicial to the safety or interests of the State, he shall be guilty of an offence under this section.

(4) A person guilty of an offence under this section shall be punishable with imprisonment for a term which may extend to five years, or if such offence is committed with intent to assist any country committing external aggression against India or to wage war against India, with death or imprisonment for life or imprisonment for a term which may extend to ten years and shall, in either case, also be liable to fine.”

**39.** Section 2 of THE CRIMINAL LAW AMENDMENT ACT, 1961 (Act No. 23 of 1961).

Whoever by words either spoken or written, or by signs, or visible representation or otherwise, questions the territorial integrity or frontiers of India in a manner which is, or is likely to be prejudicial to the interests of the safety or security of India, shall be punishable with imprisonment for a term which may extended to three years, or with fine, or with both.

**40.** Section 14 of COPYRIGHT ACT, 1957 WITH AMMENDMENT 2012  
(Act No.14 of 1957)

14(1) For the purpose of this Act, 'Copyright' means the exclusive right, subject to the provisions of this Act, to do or authorise the doing of any of the following acts in respect of a work or any substantial part thereof, namely:-

- (a) xx xx xx
- (b) xx xx xx
- (c) In the case of an artistic work:-
  - (i) To reproduce the work in any material form including-
    - (A) the storing of it in any medium by electronic or other means; or
    - (B) depiction in three-dimensions of a two-dimensional work;  
or
    - (C) depiction in two-dimensions of a three-dimensional work;
  - (ii) To communicate the work to the public;
  - (iii) To include the work in any cinematograph film;
  - (iv) To make any adaptation of the work;
  - (v) To do in relation to an adaption of the work any of the acts specified in relation to the work in sub-clauses (i) to (iv).
- (d) xx xx xx
- (e) xx xx xx

**41.** Section 63 of COPYRIGHT ACT, 1957 (Act No.14 of 1957).

Any person who knowingly infringes or abets the infringement of-

- (a) The copyright in a work, or
- (b) Any other right conferred by this act, 1[EXCEPT THE RIGHT

CONFERRED BY SECTION 23a] 2[shall be punishable with imprisonment for a term which shall not be less than six months but which may extend to three years and with fine which shall not be less than fifty thousand rupees but which may extend to two lakh rupees]

Provided that 3[where the infringement has not been made for gain in the course of trade of business] the court may, for adequate and special

reasons to be mentioned in the judgement, impose a sentence of imprisonment for a term of less than six months or a fine of less than fifty thousand rupees.

**Note:-**

1[.....] Ins. by Act 38 of 1994, s. 63.

2[.....] Subs. by Act 65 of 1984, s.5, for certain words (w.e.f. 8-10-1984).

3[.....] Ins. by Act 38 of 1994, s. 63

**42.** Notification No.19-Cus./F.No.405/18/75-Cus.III dated 6.3.1976.

In exercise of the powers conferred by sub-section (1) of the section 11 of the Customs Act,1962 (52 of 1962) and in supersession of the notification of the Government of India in the Ministry of Finance in the late Department of Revenue No.158/F.No.20/2/59-Cus. I dated 26<sup>th</sup> November, 1959, the Central Government, being satisfied that it is necessary so to do for the purpose specified in sub-section (2) of that section, hereby prohibits absolutely the import into India of a book, periodical, pamphlet, leaflet or other document containing any works, signs or visible representations which directly or indirectly question the frontiers of India as declared by the Government for the territorial integrity of the country.

**43.** Notification No.227 Customs F.No.405/3/80-Cus.III dated 29.11.1980.

In exercise of the powers conferred by section 11 of the Customs Act,1962 (52 of 1962) and in supersession of the notification of the Government of India in the Ministry of Finance (Department of Revenue) No.118 Customs dated 4th May,1963, the Central Government, being satisfied that for the maintenance of security of India, it is necessary to do so, hereby prohibits the export of maps on a scale of one-fourth inch or more equal to a mile and the micro-films obtained from such maps depicting any part of India including its international boundaries and showing topographical features by contours.

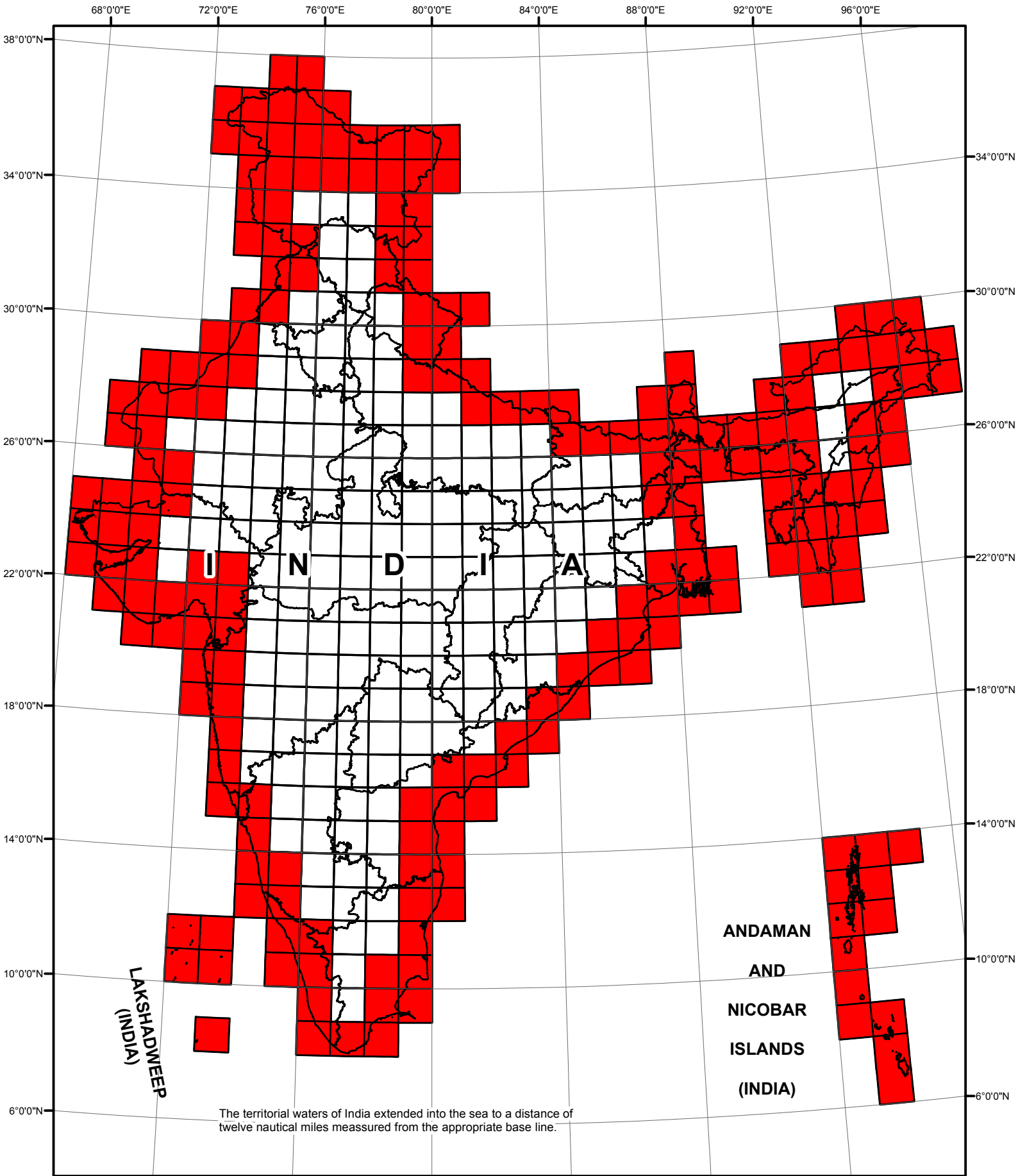


\*Provided that the prohibitions to export under this notification shall not apply in respect of the maps of Geological Survey of India (GSI) on scale of 1:2.50,000 and larger (non-digitized) of unrestricted areas only, if the Geological Survey of India ensures that no civil vulnerable points contours and spot heights. Important strategic locations or any information relating to them is depicted on such maps.

**\*(Proviso has been inserted vide Custom Notification No.70/2002 (NT) Date 15/11/2002)**

**F.No.405/3/80-Cus.III**

INDEX SHOWING AREAS OF INDIA IN WHICH CERTAIN CATEGORIES OF MAPS ARE RESTRICTED



Lambert Conformal Conic Projection

PRINTED AT THE NORTHERN PRINTING GROUP OF SURVEY OF INDIA

भारत के महासर्वेक्षकमेजर जनरल गिरीश कुमार, विशिष्ट सेवा मेडल के निदेशन में प्रकाशित  
 Published under the direction of Major General Girish Kumar, VSM Surveyor General of India,  
 Survey of India, Hathibarkala Estate, Post Box No 37, Dehra Dun-248001 (Uttarakhand),  
 Department of Science & Technology, Government of India.  
 2018.

Scale of Index 1:16 Million

AREAS IN WHICH CERTAIN CATEGORIES OF MAPS ARE RESTRICTED SHOWN THUS



**ANNEXURE 'B'****LIST OF OUTLINE MAPS OF INDIA PRINTED BY SURVEY OF INDIA**

| Sl. No. | Scale         | Remarks   |
|---------|---------------|---|
| 1.      | 2.            | 3.  |
| 1.      | 1:4.5 Million | Except serial 3 these have been printed in following styles :-<br>(i) Outline only. |
| 2.      | 1:5 "         |   |
| 3.      | 1:6 "         |   |
| 4.      | 1:7 "         | (ii) Outline with state boundaries.<br>(iii) Outline with major rivers.             |
| 5.      | 1:8.5 "       |   |
| 6.      | 1:9 "         |   |
| 7.      | 1:10 "        | Serial 3 is printed in following styles :-<br>(i) Outline only.                     |
| 8.      | 1:11 "        |   |
| 9.      | 1:12 "        |   |
| 10.     | 1:13 "        | (ii) Outline with state boundaries<br>And major rivers.                             |
| 11.     | 1:14 "        |   |
| 12.     | 1:15 "        |   |
| 13.     | 1:16 "        |   |
| 14.     | 1:17.5 "      |   |
| 15.     | 1:18 "        |   |
| 16.     | 1:19 "        |   |
| 17.     | 1:20 "        |   |
| 18.     | 1:21 "        |   |
| 19.     | 1:22 "        |   |
| 20.     | 1:23 "        |   |
| 21.     | 1:24 "        |   |
| 22.     | 1:25 "        |   |
| 23.     | 1:26 "        |   |
| 24.     | 1:27 "        |   |
| 25.     | 1:28 "        |   |
| 26.     | 1:29 "        |   |
| 27.     | 1:30 "        |   |
| 28.     | 1:31 "        |   |
| 29.     | 1:32 "        |   |
| 30.     | 1:33 "        |   |
| 31.     | 1:34 "        |   |
| 32.     | 1:35 "        |   |
| 33.     | 1:36 "        |   |

NOTE: - These outline maps are printed in single colour, viz. black.

**APPLICATION**

For Permission of the Surveyor General of India to utilise Survey of India maps.

This form duly filled-in, should be submitted to the Officer-in-charge, Boundary Verification Wing, International Boundary Directorate (SGO), MA&DC Campus, Survey of India, Dehradun -248001. It is important that full particulars should be supplied as delay will be caused if further enquiries are necessary.

1. Scale, title and edition No. Of .....  
Survey of India Maps which are to  
be utilised.
2. Describe what area of the Map is .....  
to be used, marking this if  
possible, on a copy of the Survey  
of India map under reference.
3. Scale on which the proposed map .....  
is to be made.
4. Process to be employed in .....  
production of the proposed maps.
5. Whether any details are to be .....  
added to, or omitted from the  
Survey of India Map. If so, state  
generally what they are.
6. The purpose of the proposed map, .....  
and whether the copies are to be  
disposed of separately or in a  
publication. In either case state  
proposed sale price.
7. On whose behalf the application .....  
is made.
8. No. of copies to be printed. ....
9. Language in which to be printed. ....

I clearly understand that the permission asked for will apply to the printing of the map/atlas as detailed above and a fresh permission will be required for any other printing including reprinting of the above.

Signature .....

Name in  
Block Letters .....

Date .....

Designation .....

Address .....

.....

.....

**LIST OF MAPS SALES OFFICE IN SURVEY OF INDIA**

- 1 Map Sale Office, Assam & Nagaland GDC, Survey of India, Ganeshguri Chariali, Dispur, G.S. Road, Guwahati - 781 006.  
Tel 0361-234370,  
Fax 0361-261725  
Email ID [assam.gdc.soi@gov.in](mailto:assam.gdc.soi@gov.in)
- 2 Map Sale Office, Bihar GDC, Survey of India, Sheikhpura House (Near J D Women's College), House No. 164 P O - B V College, Patna - 800 014  
Tel 0612-2280756 Ext 33  
Fax 0612-2280265  
Email ID [bihar.gdc.soi@gov.in](mailto:bihar.gdc.soi@gov.in)
- 3 Map Sale Office, Punjab, Haryana & Chandigarh GDC, Survey of India, Dakshin Marg, Sector 32-A, Chandigarh-160 030  
Tel 0172-2600031, 2603464  
Ext 254  
Fax 0172-2604671  
Email ID [phc.gdc.soi@gov.in](mailto:phc.gdc.soi@gov.in)
- 4 Map Sale Office, Chhattisgarh GDC, Survey of India, Reena Apartment, 3rd Floor, Pachpedinaka, Dhamtari Road, Raipur-492 001  
Tel 0771-2412270  
Ext 115,  
Fax 0771-2411135  
Email ID [chhtg.gdc.soi@gov.in](mailto:chhtg.gdc.soi@gov.in)
- 5 Map Sale Office, Gujarat, Daman & Diu GDC, Survey of India, Sir Creek Bhawan, Opp. Birsa Munda Bhawan, Sector 10-A, Post Box No 1, Gandhinagar - 382 010  
Tel 079-23240451-52  
Ext 213,  
Fax 079-23240451-52  
Ext 241  
Email ID [gdd.gdc.soi@gov.in](mailto:gdd.gdc.soi@gov.in)
- 6 Map Sale Office, Jharkhand GDC, Survey of India, Near Magistrate Colony, Doranda, PO - Hinoo, Ranchi - 834 002  
Tel 0651 - 2482930 Ext 223  
Fax 0651-2482789  
Email ID [jhar.gdc.soi@gov.in](mailto:jhar.gdc.soi@gov.in)
- 7 Map Sale Office, Karnataka GDC, Survey of India, Sarjapur Road, Koramangala, 2nd Block, Bangalore - 560 034  
Tel 080-25502565  
Fax 080-25533595  
Email ID [karn.gdc.soi@gov.in](mailto:karn.gdc.soi@gov.in)

- 8 Map Sale Office, Kerala & Lakshadweep GDC, Survey of India, CGO Complex, Poonkulam, Vellayani PO, Thiruvananthapuram - 695 522  
Tel 0471-2481473 Ext 34,  
Fax 0471-2481852  
Email ID [ker.gdc.soi@gov.in](mailto:ker.gdc.soi@gov.in)
- 9 Map Sale Office, Madhya Pradesh GDC, Survey of India, Survey Colony, Vijaya Nagar, Jabalpur-482 002  
Tel 0761-2646142  
Fax 0761-2643182  
Email ID [mp.gdc.soi@gov.in](mailto:mp.gdc.soi@gov.in)
- 10 Map Sale Office, Maharashtra & Goa GDC, Survey of India, Phule Nagar, Alandi Road, Opp. Dutta Mandir, Yerwad, Pune-411 006  
Tel 020-64010776  
Fax 020-26614665  
Email ID [mhgoa.pune.soi@gov.in](mailto:mhgoa.pune.soi@gov.in)
- 11 Map Sale Office, Meghalaya & Arunachal Pradesh GDC, Survey of India, Malki, Shillong-793 001  
Tel 0364-2224976  
Fax 0364-2224937, 2223170  
Email ID [megh.gdc.soi@gov.in](mailto:megh.gdc.soi@gov.in)
- 12 Map Sale Office, Survey of India, Shop No. 151&152, August Kranti Bhawan, Bhikaji Cama Place, New Delhi-110 066  
Tel 011-26184388,  
Fax 011-26107795, 26196301  
Email ID [delhi.gdc.soi@gov.in](mailto:delhi.gdc.soi@gov.in)
- 13 Map Sale Office, Orissa GDC, Survey of India, Survey Bhawan (Ground Floor), P.O R R Lab, IGNOU Road, Nayapally, Bhubaneswar-751 013  
Tel 0674-2300355,  
Fax 0674-2301418  
Email ID [ors.gdc.soi@gov.in](mailto:ors.gdc.soi@gov.in)
- 14 Map Sale Office, Rajasthan GDC, Survey of India, Great Arc Bhawan-1, Sector-10, Vidyadhar nagar, Jaipur-302 023  
Tel 0141-2236264;  
Fax 0141-2233159  
Email ID [raj.gdc.soi@gov.in](mailto:raj.gdc.soi@gov.in)
- 15 Map Sale Office, Tamil Nadu, Pondicherry and A & N Island GDC, Survey of India, Block -III, Electronic Complex, Thiru-vi-ka Industrial Estate, Guindy, Chennai - 600 032  
Tel 044-22500376, 22501567  
Ext 21,  
Fax 044-22500145  
Email ID [tnpani.gdc.soi@gov.in](mailto:tnpani.gdc.soi@gov.in)
- 16 Map Sale Office, Aandhra Pradesh GDC, Survey of India, Uppal, Hyderabad - 500 039  
Tel 040-27205548,  
Fax 040-27202059  
Email ID [ap.gdc.soi@gov.in](mailto:ap.gdc.soi@gov.in)

- 17 Map Sale Office, East Uttar Pradesh GDC, Survey of India, Manchitra Bhawan, 5- Vibhuti Khand, Gomti Nagar, Lucknow  
Tel 0522-2720740  
Fax 0522-2720634  
Email ID [up.gdc.soi@gov.in](mailto:up.gdc.soi@gov.in)
- 18 Map Sale Office, Survey of India, Hathibarkala Estate, New Cantt Road, Dehradun - 248 001  
Tel 0135-2747051-58  
Ext 4373,  
Fax 0135-2749793  
Email ID [mriw.madc.soi@gov.in](mailto:mriw.madc.soi@gov.in)
- 19 Map Sale Office, West Bengal and Sikkim GDC, Survey of India, 13, Wood Street, Kolkata-700 016  
Tel 033-22875732/33  
Ext 208 ;  
Fax 033-22879038  
Email ID [wbs.gdc.soi@gov.in](mailto:wbs.gdc.soi@gov.in)



